

**TIRTAN**  
ELECTRON CHANGER

# Instructions for use





Before using this appliance, please read the operating instructions. Only use the appliance as described in these instructions for use. Keep the instructions for future reference.

## LIST OF CHAPTERS

1.	Important safety instructions.....	2
2.	Warning.....	2
3.	Appliance parameters.....	3
4.	Package contents.....	3
5.	Appliance description.....	4
6.	Using the appliance.....	5
6.1.	Refilling.....	5
6.2.	Connecting the H <sub>2</sub> generator and the saturating mixer.....	6
6.3.	Connecting the power adapter.....	6
6.4.	Saturating the beverage.....	7
6.5.	Carbonation time.....	7
6.6.	Checking the hydrogen supply to the carbonation mixer.....	8
6.7.	Emptying the contents.....	8
7.	Regular maintenance.....	9
8.	Error codes.....	9
9.	Troubleshooting.....	9
10.	Instructions and information on handling used packaging.....	9
11.	Disposal of used electrical and electronic equipment.....	9
12.	Notes.....	10

## 1. IMPORTANT SAFETY INSTRUCTIONS

- 1.1. If the appliance is damaged due to failure to follow the instructions in this manual, the warranty will become void. The manufacturer/distributor is not liable for any damage caused by failure to follow the instructions in this manual. Careless use of the appliance is not in accordance with the terms of this manual.
- 1.2. Before connecting the appliance to a power outlet, make sure that the input voltage of 100-240V indicated on the type label of the power adapter matches the electrical voltage of the outlet.
- 1.3. Only connect the appliance to a properly grounded outlet.

## 2. WARNING

- 2.1. This appliance can be used by children aged 8 years and above and persons with reduced physical, sensory, or mental capabilities or lack of experience and knowledge if they are supervised or have been instructed on how to use the appliance safely and understand the potential dangers. Cleaning and maintenance by the user must not be carried out by children unless they are 8 years of age or older and under supervision. Keep the appliance and its power cord out of the reach of children under 8 years of age.
- 2.2. Children must not play with the appliance.
- 2.3. Do not use the appliance for purposes other than those for which it is intended.
- 2.4. The appliance is not intended to be controlled by a programmer, external timer, or remote control.
- 2.5. If you are not using the appliance or plan to clean it, always switch it off and unplug it from the power outlet.
- 2.6. Do not use the appliance if it is not working properly, has been dropped, damaged, or if the  $H_2$  generator has been submerged in water. Do not use the appliance if the power cord plug is damaged. Never repair the appliance yourself.
- 2.7. Do not make any modifications to the appliance – there is a risk of electric shock. Entrust all repairs and adjustments to this appliance to an authorized service center or official distributor.
- 2.8. Do not disconnect the appliance from the mains socket by pulling on the power cord – this may damage the power cord/mains socket.
- 2.9. Do not place heavy objects on the power cord. Make sure that the power cord does not hang over the edge of the table.
- 2.10. Protect the power cord from damage by sharp edges or hot objects.
- 2.11. Always disconnect the appliance from the mains before assembling, disassembling, cleaning, or handling it.
- 2.12. The appliance is intended for domestic use.
- 2.13. Do not place the appliance near sources of heat.
- 2.14. To avoid injury, prevent hair or clothing from coming into contact with the blender while blending.
- 2.15. When working with the immersion blender, do not reach into the containers with your fingers or tools. There is a risk of injury or damage to the blender.
- 2.16. The  $H_2$  generator (see Chapter 4. Package Contents) must not come into contact with water. Never immerse the  $H_2$  generator in water.
- 2.17. **If the  $H_2$  generator is filled with ultra-pure water, it must be kept in a vertical position ONLY! Do not tilt the filled  $H_2$  generator, as this may damage the appliance.**
- 2.18. **The appliance must be transported in an upright position. If this is not possible, it is necessary to drain the ultra-pure water from the generator and TRANSPORT IT EMPTY!**



### 3. E PARAMETERS OF THE APPLIANCE

Weight without filling:	1.4 kg
Maximum power consumption:	100 W
H <sub>2</sub> production:	80-100 ml/min
H <sub>2</sub> purity:	99.99%

### 4. CONTENTS OF PACKAGE

1. H<sub>2</sub> generator
2. Saturation mixer
3. Magnetic mixing attachment
4. Connecting tube with connectors
5. USB Type-C power adapter 100 W / 20 V
6. Container with lid
7. UPW (ultra-pure water) refill 0.5 l
8. Carrying bag with strap

1



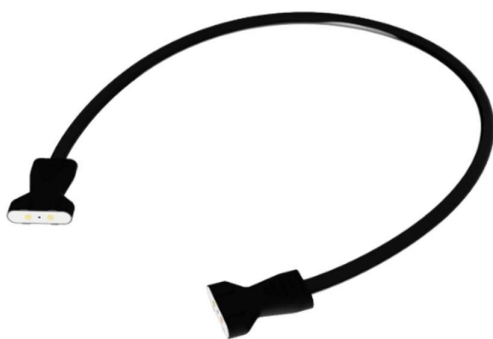
2



3



4



5



6



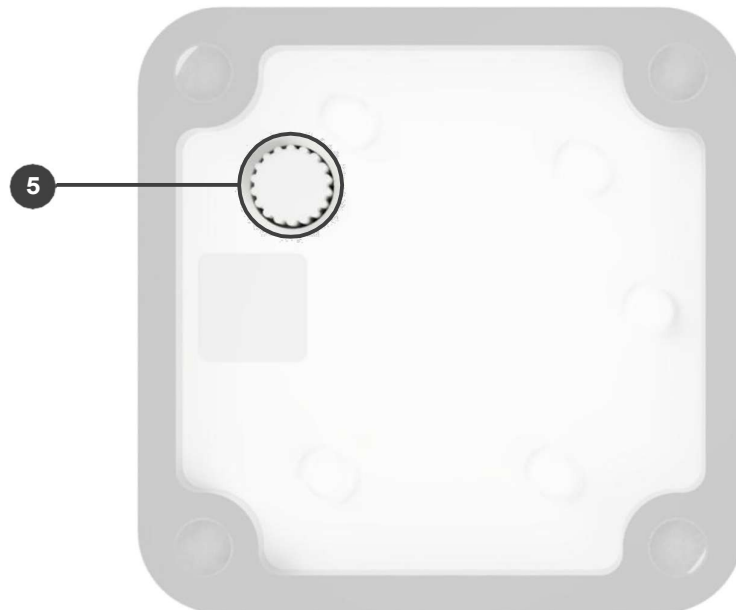
## 5. DESCRIPTION OF THE APPLIANCE

1. On/off button
2. Filling hole plug
3. Information display
4. Opening for connecting hose
5. Drain plug

TOP VIEW



VIEW FROM BELOW

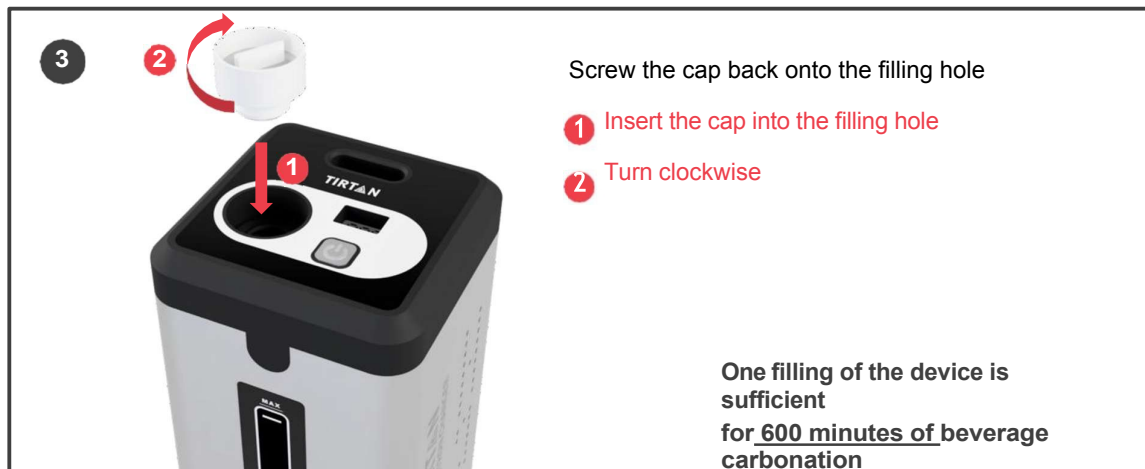
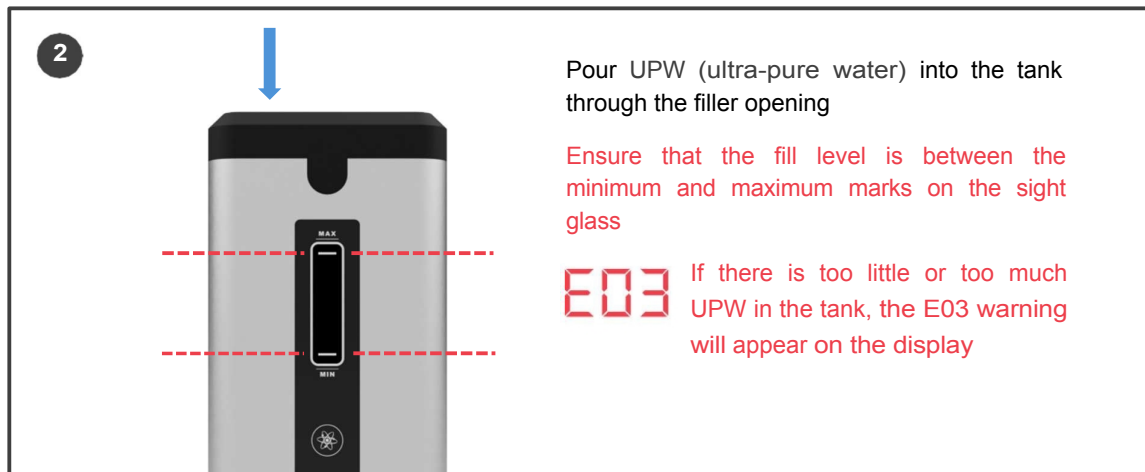


## 6. E USE OF THE APPLIANCE

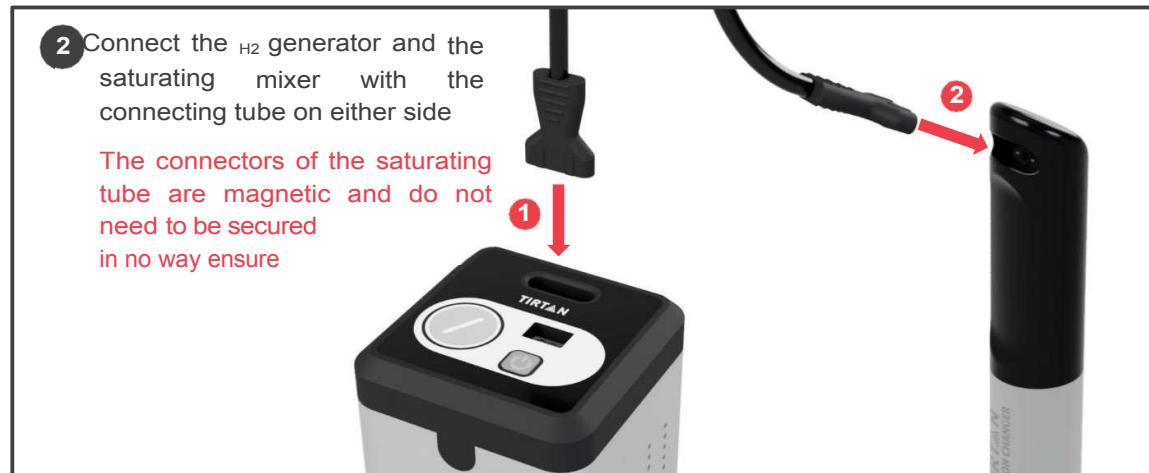
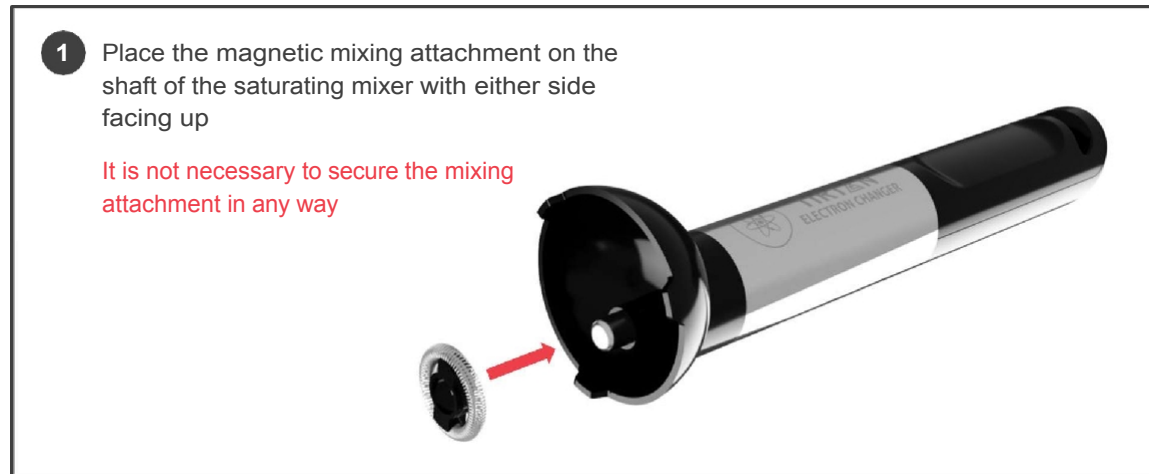


Before using the appliance for the first time, wash the blending jar, magnetic mixing attachment, and container with lid under running water. When washing the blending jar, make sure that no water gets into the opening for the connecting tube.

### 6.1.



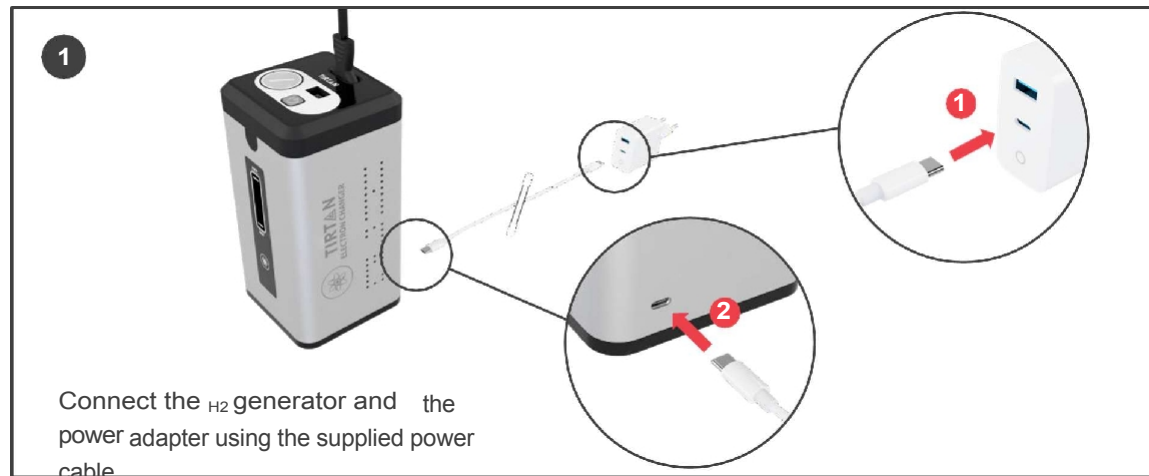
## 6.2. CONNECTING THE H<sub>2</sub> GENERATOR AND THE CARBONATION BLENDER



## 6.3. CONNECTING THE POWER ND ADAPTER



Use only the power adapter supplied by the manufacturer. Neither the manufacturer nor the distributor is responsible for damage caused by a non-original power adapter.



## 6.4. N BEVERAGE



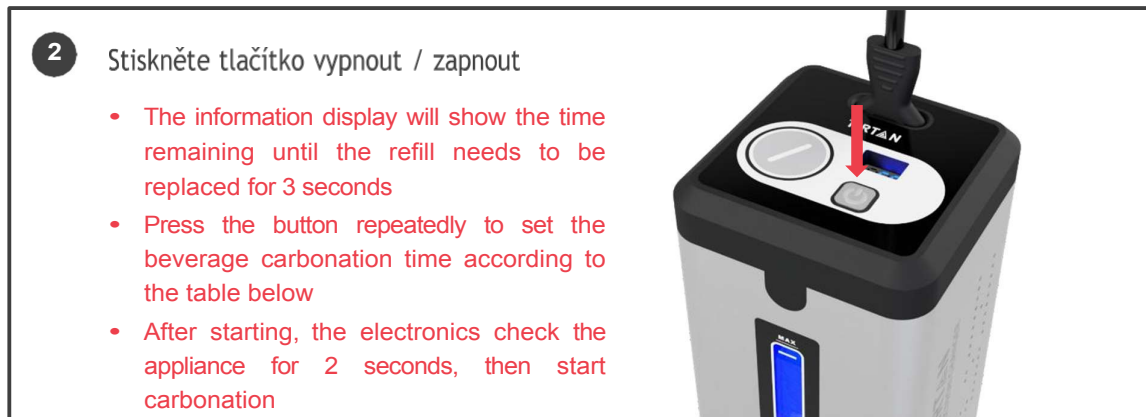
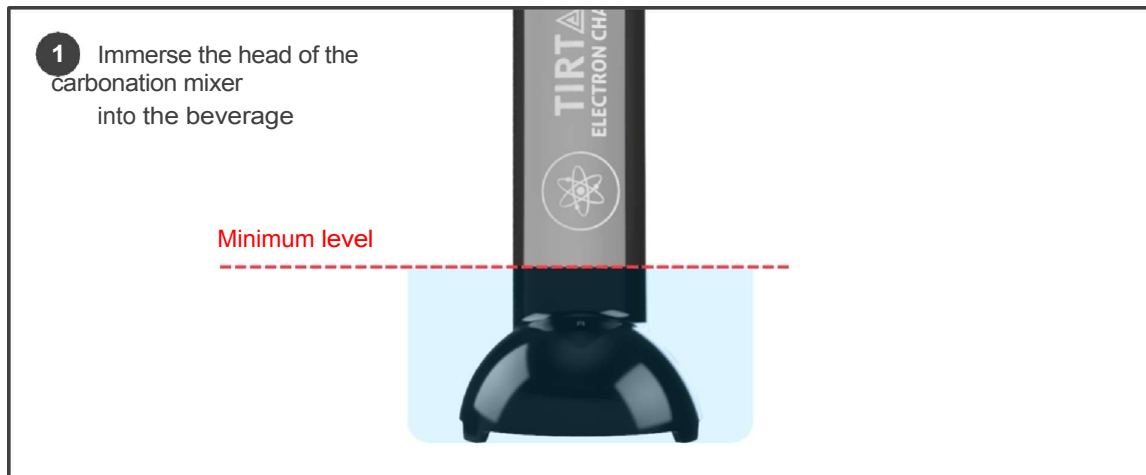
The maximum temperature of the carbonated beverage must not exceed 70°C. Higher temperatures may damage the appliance.



Never turn on the appliance unless the head of the carbonating mixer is submerged in the beverage. Doing so may damage the appliance.



The minimum level of the carbonated beverage must always reach at least the joint between the plastic head and the stainless steel part of the carbonation mixer.



## 6.5. TIMING FOR CARBONATIO

1* press of the button	60 seconds of carbonation
2* presses of the button	120 seconds of saturation
3* presses of the button	300 seconds of saturation
4* presses of the button	turn off

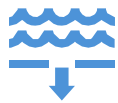
60 seconds of carbonation is sufficient to carbonate 1 liter of beverage. Longer carbonation times increase the stability of the carbonated beverage over time.

Stability over time is directly affected by the temperature of the water and the size of the water surface. The warmer the water and the larger the water surface, the shorter the stability. Therefore, we recommend storing the saturated beverage in a cool place in the smallest possible container.

## 6.6. CHECKING THE HYDROGEN SUPPLY TO THE SATURATION BLENDER

Remove the magnetic mixing attachment from the shaft of the saturating mixer. Immerse the saturating mixer in water. After starting the saturation cycle, bubbles should come out of the head of the saturating mixer. If no bubbles come out, disconnect and reconnect the connecting hose from the H<sub>2</sub> generator and the saturating mixer.

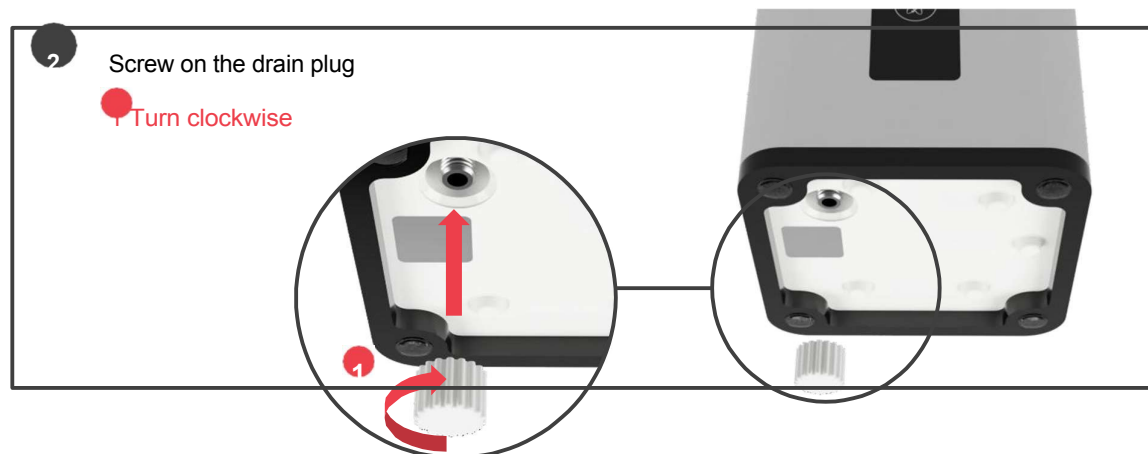
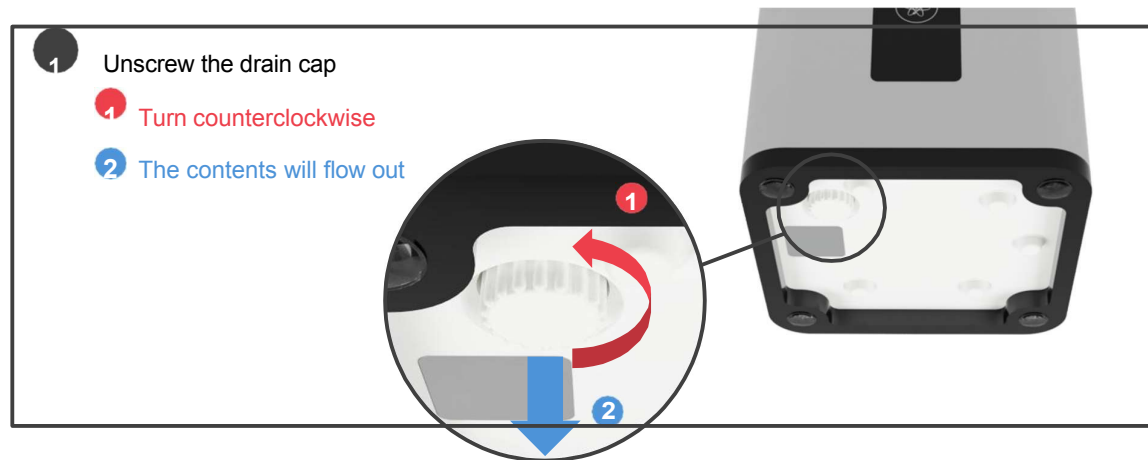
## 6.7. EMPTYING THE



Replacing the filling is necessary before transport in a position other than upright and/or after 600 minutes of use. See section 7.2 of this manual.



When draining the contents, hold the H<sub>2</sub> generator over a container with a capacity of at least 0.5 l or over a sink. The contents will start to flow out immediately after unscrewing the drain cap.



## 7. REGULAR MAINTENANCE AND REPLACEMENT OF ULTRA-CLEAN WATER IN THE GENERATOR

- 7.1. When carbonating beverages other than pure water, wash the carbonation mixer and magnetic mixing attachment under running water. When washing the carbonation mixer, make sure that no water gets into the connection hose opening.
- 7.2. After 600 minutes of use, the cartridge must be replaced. The device will notify you of the necessary replacement by displaying error code E02.
- 7.3. **When pouring in new fluid (ultra-pure water), keep the device plugged into the mains via the adapter.** Slowly add water and, once the minimum level is reached, the E02 error message will disappear and the 600-minute interval counter will reset to the default value of 600 minutes. Then fill the water to halfway between Min and Max; more is not needed because water consumption is minimal.



## 8. ERROR CODES

<b>E01</b>	Overheating – it is necessary to let the device cool down.
<b>E02</b>	The filling in the H <sub>2</sub> generator is not sufficiently pure or is abnormal / the 600-minute interval has expired and the filling needs to be replaced
<b>E03</b>	There is too little or too much filling in the H <sub>2</sub> generator
<b>E04</b>	The device is not standing upright / loss of vertical position
<b>E05</b>	The device needs maintenance/service

## G. TROUBLESHOOTING

The H <sub>2</sub> generator cannot be started	Make sure the power adapter is connected
	Make sure the power adapter is plugged into the outlet
The magnetic stirrer The mixing magnet	Disconnect and reconnect the connecting hose from the H <sub>2</sub> generator and the saturating mixer

## 10. INSTRUCTIONS AND INFORMATION ON DISPOSAL OF USED ND PACKAGING

Dispose of used packaging material at a designated waste disposal site.

## 11. DISPOSAL OF USED ELECTRICAL AND ELECTRONIC EQUIPMENT



This symbol on products or accompanying documents indicates that used electrical and electronic products must not be disposed of with normal household waste. For proper disposal, recovery, and recycling, please take these products to designated collection points. Alternatively, in some European Union countries or other European countries, you can return your products to your local retailer when purchasing an equivalent new product. By disposing of this product correctly, you will help to conserve valuable natural resources and prevent potential negative impacts on the environment and human health, which could be caused by improper waste disposal.

This product complies with all the essential requirements of the EU directives that apply to it.



